

# Responsive

re·spon·sive: \ri- spän(t)-siv\  
Function: adjective

Date: 15th century

1 : quick to respond or react appropriately or sympathetically.

Being there when you are needed. Whether the client knows it or not. Sometimes it's a matter of speed. Sometimes it's a matter of listening. Being responsive is different than being reactive.

"The Catch" refers to a memorable defensive baseball play by Willie Mays on September 29, 1954, during Game 1 of the 1954 World Series between the New York Giants and the Cleveland Indians at the Polo Grounds in New York on a ball hit by Vic Wertz. The score was tied 2-2 in the top of the eighth inning. Starting pitcher Sal Maglie walked Larry Doby and gave up a single to Al Rosen.

Wertz worked the count to two balls and a strike before crushing reliever Don Liddle's fourth pitch 420 feet to deep center field. In many stadiums, the hit would have been a home run and given the Indians a 5-2 lead. However, this was the spacious Polo Grounds, and Giants center fielder Willie Mays, who was playing in shallow center field, made an on-the-run over-the-shoulder catch to make the out. Having caught the ball, he immediately spun and threw the ball, losing his hat in characteristic style.

The 20,000 sf renovation of the S. Rose Company contract furniture showrooms and offices started out as a simple cosmetic refurbishment. But demolition revealed structural failures of beams due to extreme snow loads, and the removal of the precast facade revealed substantial damage to the exterior masonry.

Field condition surprises required regular and continuous reactions from owner, architect and contractor to revise the scope of work and achieve the functional objectives. The work environments are the showrooms with a spacial sequence for guests that involves alternative paths, depending on the amount of time and the type of products of interest to the customer.

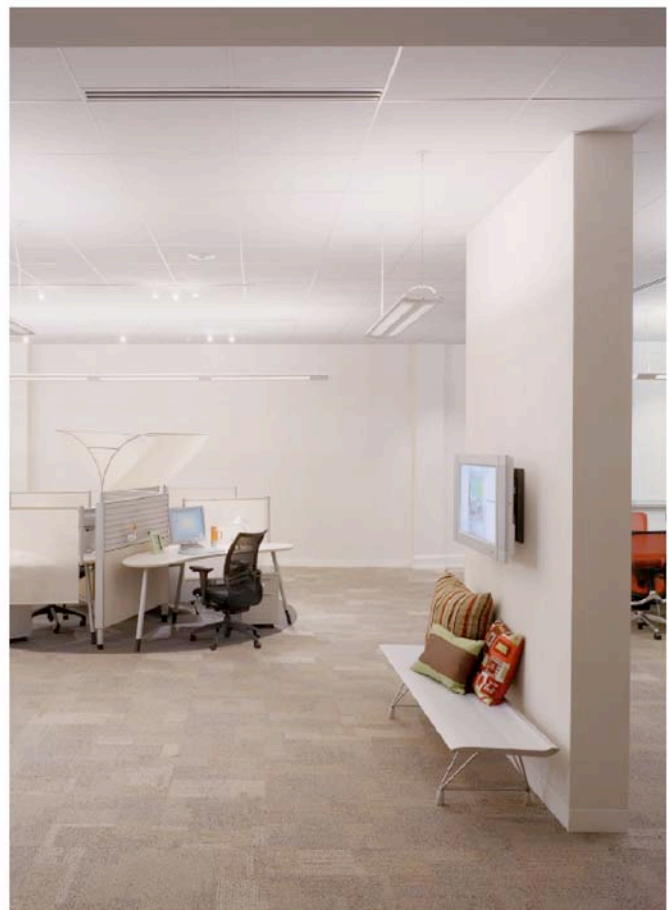
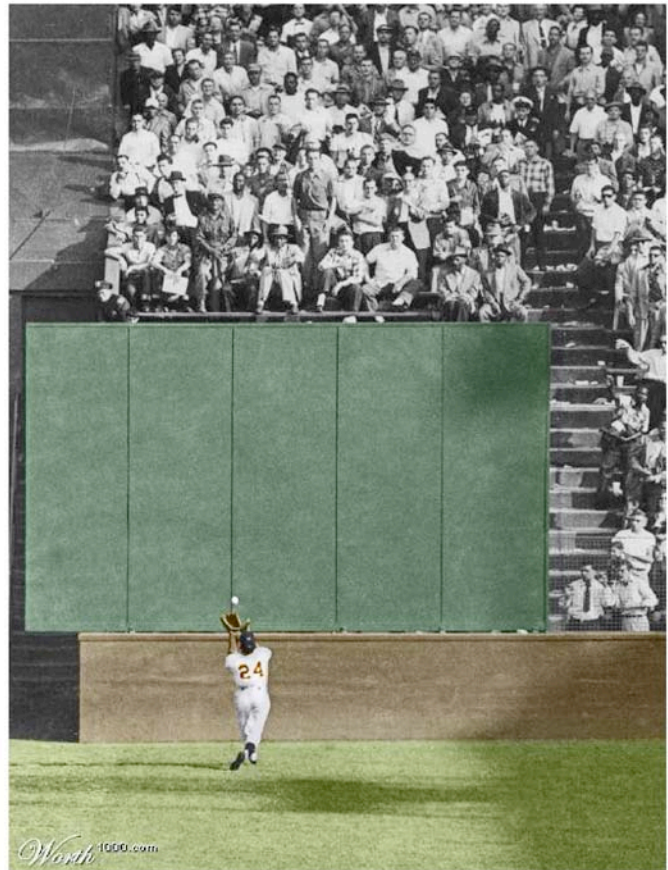
We don't mind homework to make sure we know everything we need to know to step up to the plate and score one for our clients. And in this era where flexibility is essential and curveballs are routine, you've got to stay nimble.

"During the renovation of our showroom and offices, we had many challenges to overcome. The scope changed multiple times over the two plus years we were under construction due to unforeseen building conditions and changing space requirements. Bill Eberhard worked with us throughout to accommodate the ever-changing conditions and ultimately achieve the exceptional result we have in our completed space."

**Paul Johanni, Chief Operating Officer**  
S. Rose Company

**S. Rose Company Renovation**  
Cleveland, OH

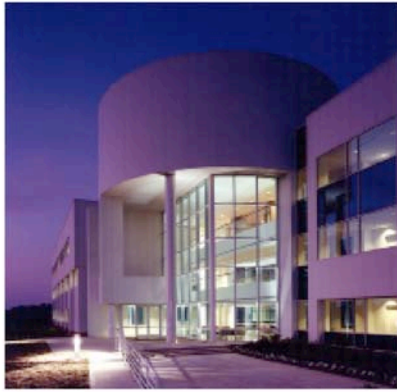
*Publication: Properties magazine*





# EBERHARD ARCHITECTS LLC

Design Excellence. On Time. On Budget!



Wayne Dalton Headquarters  
Mt. Hope, OH  
AIA Ohio Design Award  
AIA Cleveland Design Award  
First Place, Build Ohio Competition



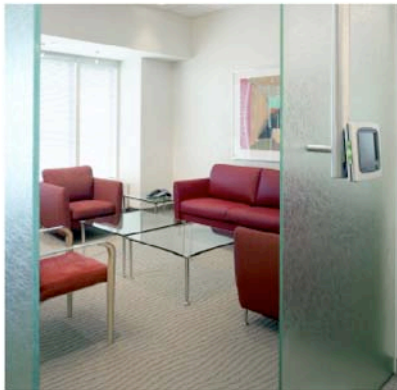
Dollar Bank/  
Renovation of the Galleria at Erievue  
Cleveland, OH  
First Place, Retail Renovation, VM+SD  
National Design Competition  
City of Cleveland Redevelopment  
Project of the Year  
IIDA Cleveland Design Award



Technology Learning Center  
Cuyahoga Community College  
Cleveland, OH  
American School & University Design  
Award



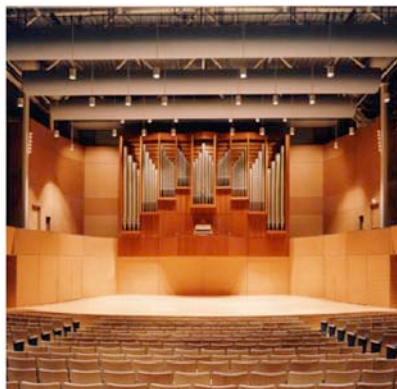
Student Service/ Learning Resource  
Center  
Terra Community College  
Fremont, OH



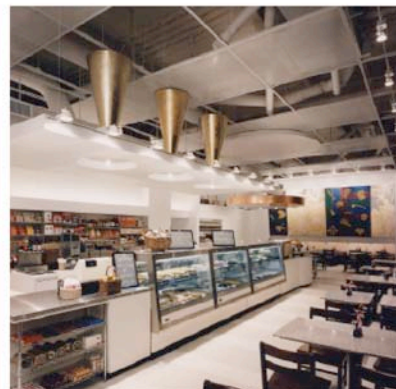
McKinsey & Company, Inc.  
Cleveland, OH  
IIDA Regional Design Awards  
IIDA + IESNA Regional Design Awards  
NAIOP Regional Design Award



Vocational Guidance Services Training  
Center  
Cleveland, OH  
AIA Cleveland Design Award  
IIDA + IESNA Regional Design Awards



Wategen Hall Renovations;  
Cleveland State University  
Cleveland, OH



Cafe Paradiso  
Cleveland, OH  
IDB/ IIDA National Design Competition  
Winner  
AIA Ohio Design Award  
AIA Cleveland Design Award  
IIDA Cleveland Design Award  
NAIOP Regional Design Award

Four Decades of Outstanding Performance